

RINA DIRISIO
REAL ESTATE, BUT BETTER



2299 MILLSTONE DRIVE

OAKVILLE, ON



THIS EXQUISITE 4+1-BEDROOM, 3.5-BATHROOM EXECUTIVE RESIDENCE, COMPLETE WITH A PROFESSIONALLY FINISHED BASEMENT AND A STUNNING BACKYARD OASIS FEATURING A PRISTINE SALTWATER POOL, INVITES YOU HOME TO THE HIGHLY SOUGHT-AFTER AND FAMILY-FRIENDLY COMMUNITY OF WESTMOUNT.

Millstone Park is just a two-minute stroll from your doorstep, the Oakville Trafalgar Memorial Hospital is only a two-minute drive away, and commuters enjoy seamless access to the 407 ETR and the QEW/403 highways. Surrounded by a wealth of amenities, including lush parks, scenic trails, top-rated schools, shopping plazas, and numerous restaurants, this location offers everything a modern family could desire.

Impressive curb appeal with a striking stone and stucco exterior, enhanced by professional landscaping with stone accents, lovely gardens and a mature shade tree. Step into the backyard sanctuary, where an expansive stamped concrete patio envelops a picture-perfect inground saltwater pool. Tall cedars provide privacy and a lush, green backdrop, creating a serene space for relaxation and outdoor entertaining. For added convenience, a gas line is available for a patio heater, fire pit, or barbecue setup.

Thoughtful architectural details create a sense of timeless sophistication and elegance. Highlights include expansive windows, beautiful new hardwood flooring (2025) and 9-foot main floor ceilings, decorative half-walls with columns, designer tiles, pot lighting, and a beautifully coordinated updated hardwood staircase (2025). The sunken living room and a raised formal dining room with a coffered ceiling are perfect for graceful hosting. At the heart of the home, the spectacular eat-in kitchen boasts full-height custom cabinetry, under-cabinet valance lighting, quartz countertops, a centre island with a breakfast bar, high-end stainless-steel appliances, and a bright breakfast room and a walkout to the backyard. Warmth and charm await in the spacious family room with a gas fireplace and serene pool views. The upper-level features a versatile office/sitting room, four generous bedrooms and two full bathrooms, including the primary suite featuring an inviting 5-piece ensuite bath with a soaker tub and a separate glass shower. The professionally finished basement extends your living space with a recreation room, a games room, and a fifth bedroom with direct access to a 3-piece bathroom. Recent improvements include a new air conditioner and roof shingles installed in June 2022, ensuring peace of mind. The saltwater pool is meticulously maintained, with filters replaced every two years. This extraordinary home truly combines luxurious living with practicality in one of Oakville's most desirable neighbourhoods.



SUNKEN FOYER

- Double entrance doors with a transom and leaded glass inserts
- Oversized stone-look floor tiles and new hardwood flooring extends throughout the main hall
- Updated oak staircase with dark-stained treads and contrasting white pickets and risers
- Walk-in closet
- Inside entry to the attached double garage is in the back hall area





SUNKEN LIVING ROOM (11'8" X 11'6")

- Beautiful new hardwood floor
- Three large windows to the front gardens





DINING ROOM (12'5" X 11'6")

- Elegant, coffered ceiling
- Beautiful new hardwood floor
- Modern chandelier
- Two large windows

BRIGHT KITCHEN



KITCHEN (13'2" X 10'3")

- Extensive dark-stained custom maple cabinetry
- Upper cabinets with crown mouldings and under-cabinet lighting
- China cabinet
- Numerous drawers, including pot drawers
- Centre island with a breakfast bar
- Quartz counters and complementing split stone tile backsplash
- Pot lights and sleek island lighting
- Upgraded oversized stone-look floor tiles
- Stainless steel appliances, including a French door fridge with a bottom-mount freezer drawer, a gas range with a downdraft range hood fan, a built-in convection oven and a built-in dishwasher





BREAKFAST ROOM (10'3" X 7'3")

- Split stone feature wall
- Upgraded oversized stone-look floor tiles
- Half-wall with a decorative column is open to the family room
- Pendant-style chandelier with a drum shade
- Large window to the side yard and sliding glass doors to the backyard oasis and pool



FAMILY ROOM (18'1" X 12'6")

- Beautiful new hardwood floor
- Gas fireplace with marble surround, a classic white mantel, and prewired for a flat-panel TV above
- Sconce lights and a matching ceiling light
- Half-wall with a decorative column to the hall area
- Two large windows with pool views



BATHROOM (2-PIECE)

- White plumbing fixtures, including a pedestal sink
- Neutral stone-look floor tiles
- Installed display shelf

RENOVATED LAUNDRY ROOM (6'7" X 10'0")

- Extensive custom white cabinetry
- Pantry with bottom storage drawers
- Oversized pot drawers
- Large counter, elongated glass tile backsplash and display shelf above
- Built-in stacked washer and dryer with a stainless-steel finish
- Neutral stone-look floor tiles
- Exterior door with a glass insert accessing the pool and backyard

SECOND LEVEL



SITTING AREA (8'11" X 7'8")

- Beautiful new hardwood floor
- Ceiling light
- Open to the staircase





PRIMARY BEDROOM (19'1" X 12'1")

- Neutral broadloom
- Two large windows with pool views
- Upgraded ceiling fan
- Two walk-in closets, one with a custom organizer

ENSUITE BATHROOM (5-PIECE)

- Plenty of cabinetry with a centre bank of drawers
- Double sinks with upgraded widespread faucets
- Neutral floor tiles
- Corner soaker tub with neutral tile surround
- Corner windows above the tub
- Separate shower with neutral tile surround and a frameless glass enclosure





BEDROOM 2 (11'6" X 10'9")
BEDROOM 3 (17'1" X 10'9")
BEDROOM 4 (12'3" X 11'6")

- Three additional second-floor bedrooms feature large windows, neutral broadloom and ample closet space.



BATHROOM (4-PIECE)

- The main bathroom offers extensive white cabinetry, neutral floor tiles, a window and a tub/shower combination with neutral tile surround.
- Lower Level

LOWER LEVEL



RECREATION ROOM (21'5" X 15'6")

- Wide-plank laminate flooring
- Numerous pot lights
- Rough-in for future fireplace

GAMES ROOM (16'5" X 23'1")

- Pot lights
- Wide-plank laminate flooring



BEDROOM 5 (16'7" X 10'9")

- Double entrance doors
- Pot lights
- Two windows
- Wide-plank laminate flooring
- Closet

BATHROOM (3-PIECE)

- Neutral stone-look floor tiles
- Corner shower with a sliding glass enclosure
- White plumbing fixtures, including a pedestal sink
- Window



SCHOOLS

Elementary

Emily Carr - English Track - JK - GR08

Forest Trail - FI - GR02 - 08

St. Paul II CES - Regular Track - JK - GR08

St. Mary CES - FI - GR01 - GR08

St. Joan of Arc CES - ExF - GR05 - 08

Secondary

Garth Webb - English Track/FI - GR09 - 12

St. Ignatius of Loyola CSS - Regular Track/FI/ExF - GR09 - 12



Taxes: \$8,102 for 2025

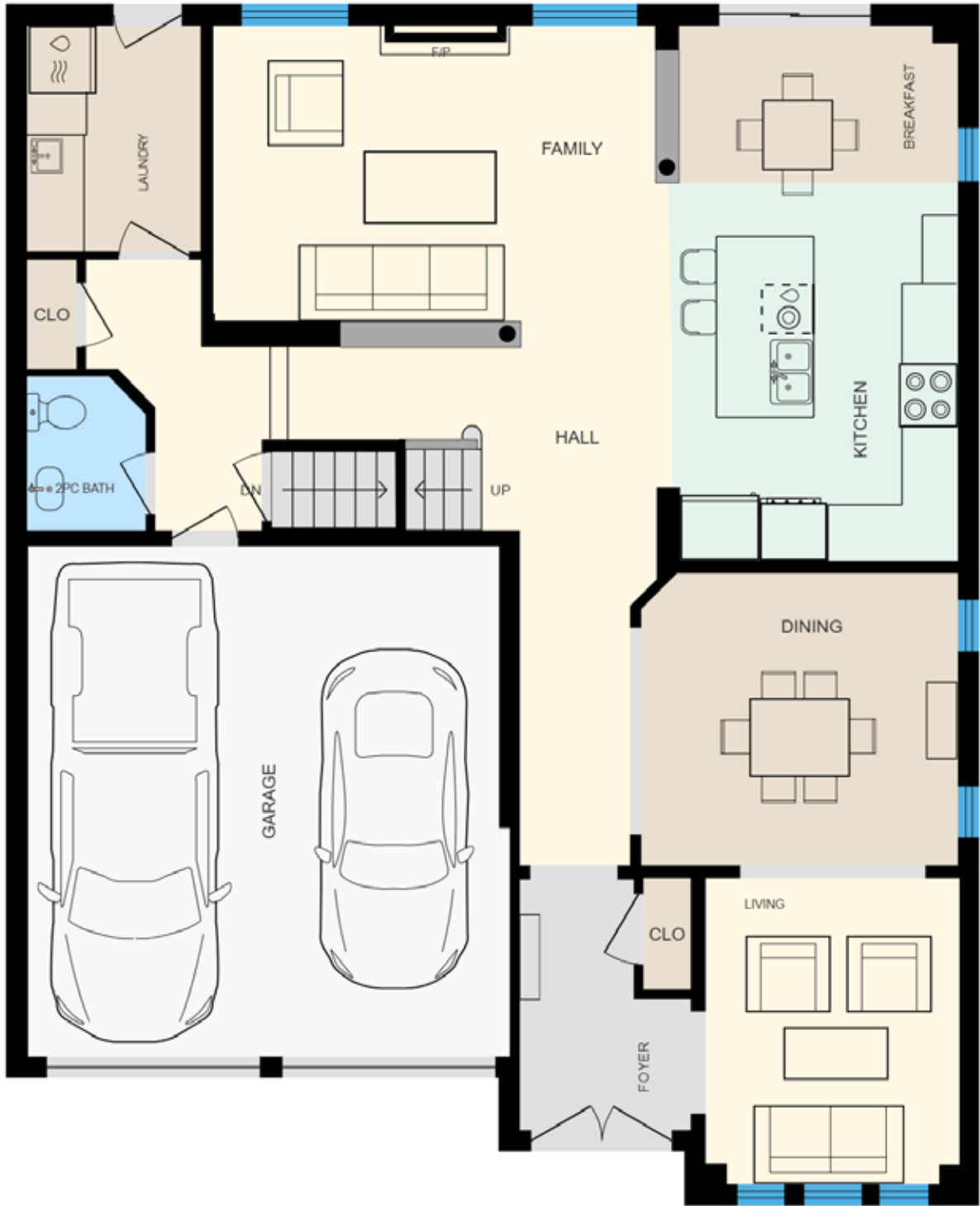
Lot Size: 44.37 x 91.86 Feet

Inclusions: Built-in dishwasher, fridge, stove, washer, dryer, all elfs, all window coverings, all pool equipment, alarm

Exclusions: TV's



FLOOR PLANS



All room dimensions and floor areas must be considered approximate and are subject to independent verification.



RINA DIRISIO
SALES REPRESENTATIVE
LIFETIME RESIDENT OF OAKVILLE

CELL 416.804.4347
EMAIL RINA@RINA.CA

251 NORTH SERVICE ROAD WEST
OAKVILLE ONTARIO L6M 3E7

Royal LePage Real Estate Services Ltd., Brokerage

RINA.CA

WE SELL REAL ESTATE BUT BETTER.



Information in this brochure is deemed accurate but not guaranteed.
School boundaries may change for upcoming school year.